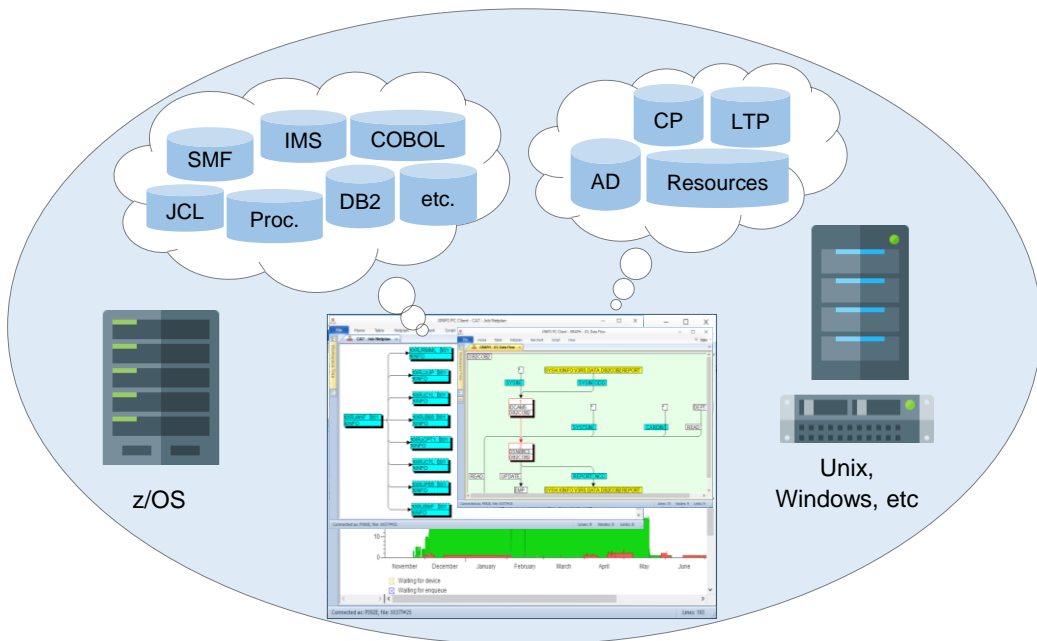


XINFO

IWS z/OS

As a user of IWS for z/OS, you know how important this system is for planning, automation, and control of your batch processing. With perhaps thousands of jobs running every night, IWS for z/OS is critical to the completion of your batch production.

However, as projects grow, they become harder and harder to manage. When you are faced with problems, change requests or simply the need to have IWS for z/OS information available: XINFO is the only choice.



XINFO - The IT Information System

XINFO's PC Dialog shows your IWS for z/OS data and displays the result in a way you have never seen it before. Applications, Operations, Special Resources, Variables, ETTs and much more as easy to understand tables, netplans and barcharts.

Use XINFO to distribute IWS for z/OS information, even via the Internet or Intranet. Use any Browser to access production information from anywhere at anytime. Visit our homepage and see an example: www.horizont-it.com.

XINFO

IWS z/OS

Areas of Application

XINFO is the program for anyone who needs information about IWS for z/OS definitions or actual plan data.

- Production planning
- Production control
- Application programmers
- Non IT departments
- Project and test teams

Data Sources

XINFO analyses all IWS for z/OS definitions and plans, e.g.

- Application Description
- Current Plan
- Long Term Plan
- Special resource Definitions
- ETT
- Calendar
- Periods
- Workstations
- Variables

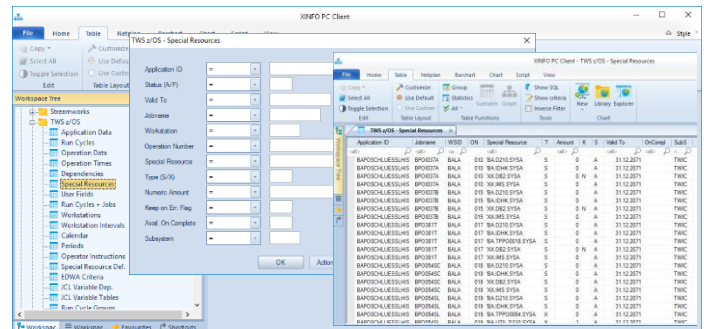
Graphics

XINFO displays your IWS for z/OS definitions as easy-to-read graphics:

- Job netplans grouped by application id, owner id etc.
- All predecessors or successors of a start operation
- Supports all printers

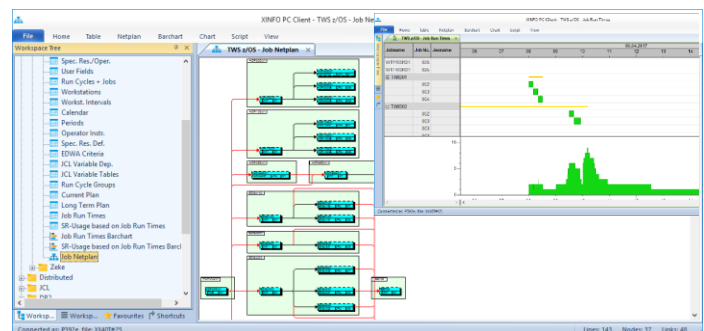
Data center documentation

All reports and graphics can be created automatically.



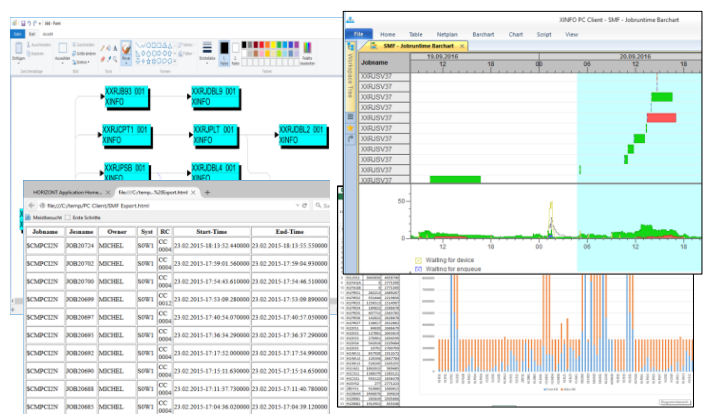
Dialogs

XINFO's PC Dialog enables you to enter selection criteria in predefined panels and display the results in tables. Of course there is also an ISPF Dialog.



Graphics

XINFO represents your IWS for z/OS definitions as clear graphics. Because: A picture is worth a thousand words!



Representation

XINFO enables you to display and share your data in various ways: Export graphics to WinWord, tables to Excel, or distribute IWS definitions via the Intranet.