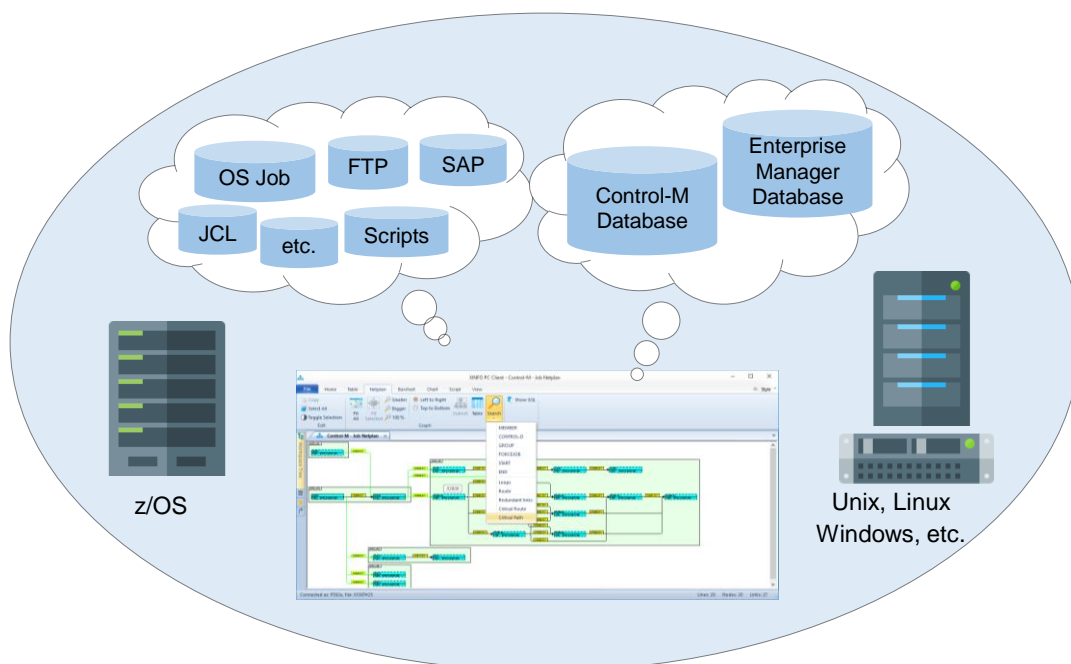


XINFO

Control-M z/OS and ds

As a Control-M user, you know how important this system is for planning, automation, and controlling of your Workload Automation. With probably several thousand jobs running daily, Control-M is essential to the flow of your production operations.

→ The production is distributed across many platforms, jobs are scheduled on z/OS, UNIX, Linux or Windows. A scheduler such as Control-M takes on a central function: Job scheduling is planned, executed and monitored across platforms.



XINFO - The IT Information System

→ XINFO's dialog easily displays all data from your Control-M and Enterprise Manager. Folder, jobs, members and conditions are displayed as easily understandable tables. Complex crossplatform processes are displayed graphically as networks diagrams and bar charts.

↑ XINFO analyses your Control-M definition data. The user can retrieve all information about jobs, conditions, resources, shout and control data. Relationships create connections to other data: From production job to JCL, to runtime information, to tape management, to output management, etc.

XINFO

Control-M z/OS and ds

Areas of Application

XINFO is the information system for all employees who work directly with Control-M or simply need general information about job processes:

- Production planning
- Production control
- Application programmers
- Non IT departments

Data Sources

XINFO analyses Control-M and Enterprise Manager definitions under z/OS, UNIX, Linux, Windows, etc.

- General Job Definitions
- Scheduling Definitions
- IN/OUT Conditions
- Control/Quantitative Resources
- "Shout When" Definitions
- Variables Definitions
- Script Definitions
- Job History
- Average Job Duration
- Forecast

Graphics

XINFO displays your Control-M definitions as easy-to-read graphics:

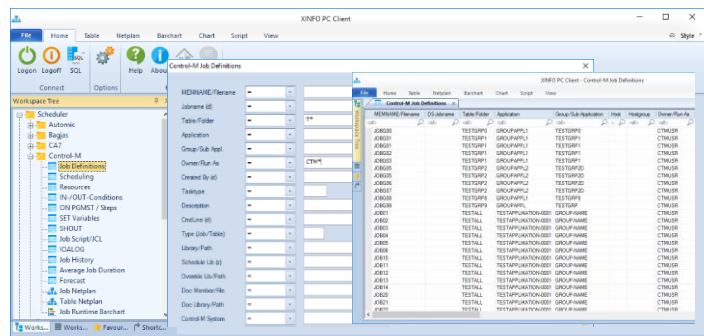
- Cross platform job netplans
- Cross platform table netplans
- Cross platform bar charts

IT charts

XINFO enables any statistical evaluations over longer periods of time: job cancellations, runtime fluctuations, etc..

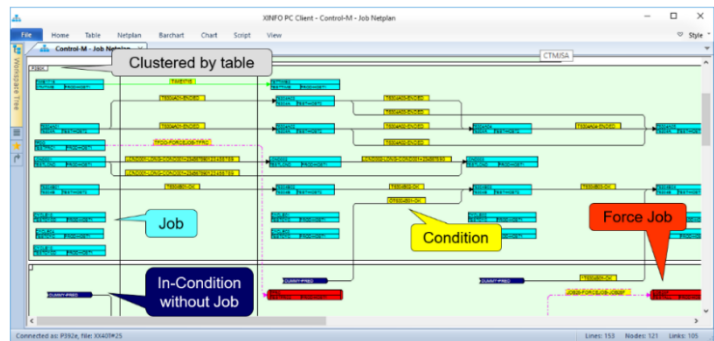
Data center documentation

All reports and graphics can be created automatically.



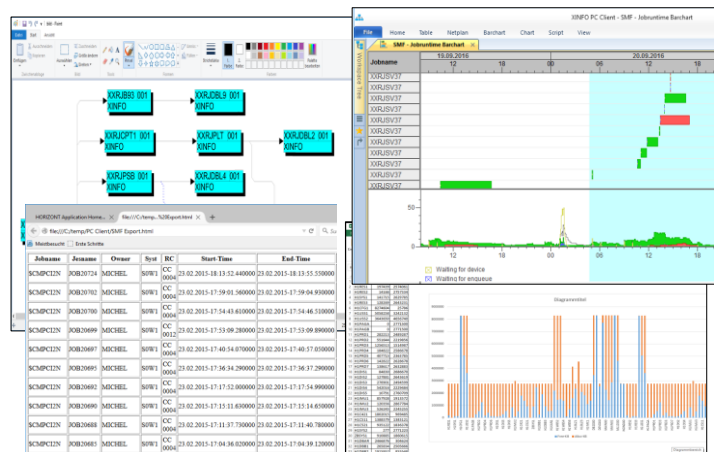
Dialogs

XINFO's PC Client enables you to enter selection criteria in predefined panels and display the results in tables. Of course there is also an ISPF Dialog.



Graphics

XINFO represents your Control-M data as clear graphics. Because: A picture is worth a thousand words!



Representation

XINFO enables you to share your data in various ways: Export Graphics to WinWord, tables to Excel, or distribute jobflows via the Intranet.