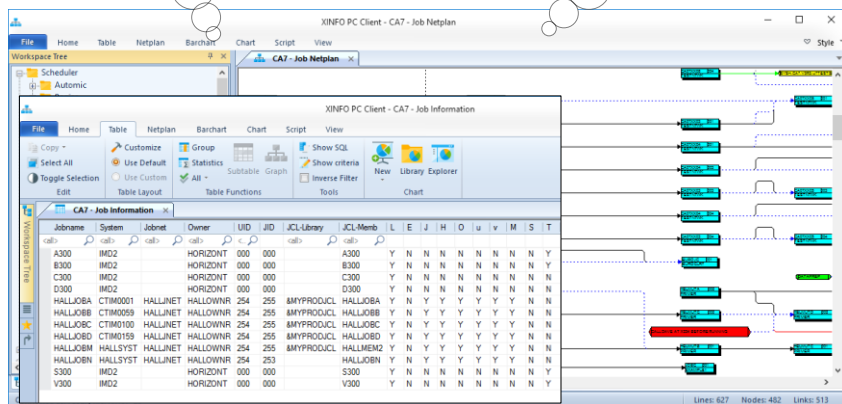
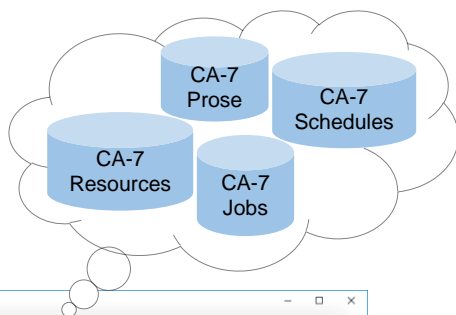
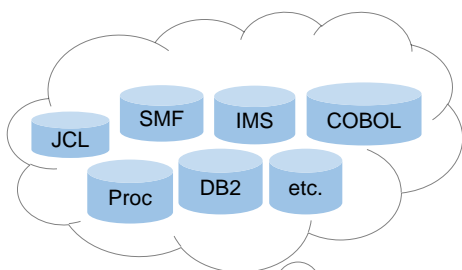


XINFO

CA-7

As a user of CA-7, you know how important this system is for planning, automation, and control of your batch processing. With perhaps hundreds or thousands of jobs running every night, CA-7 is critical to the completion of your batch production.

However, as projects grow, they become harder and harder to manage. When you are faced with problems, change requests or simply the need to have CA-7 information available: XINFO is the only choice.



XINFO - The IT Information System

XINFO's PC Dialog shows your CA-7 data and displays the result in a way you have never seen it before. Jobs, requirements and triggers are shown as easy-to-understand netplans and barcharts.

Use XINFO to distribute CA-7 information, even via the Internet or Intranet. Use any Browser to access production information from anywhere at anytime. Visit our homepage and see an example: www.horizont-it.com.

XINFO

CA-7

Areas of Application

XINFO is the program for anyone who needs information about CA-7 definitions or actual plan data.

- Production planning
- Production control
- Application programmers
- Non IT departments
- Project and test teams

Data Sources

XINFO analyses all CA-7 definitions.

- Job
- Schedules und Schedule Overrides
- Requirements und Trigger
- Prose
- Virtual Resources

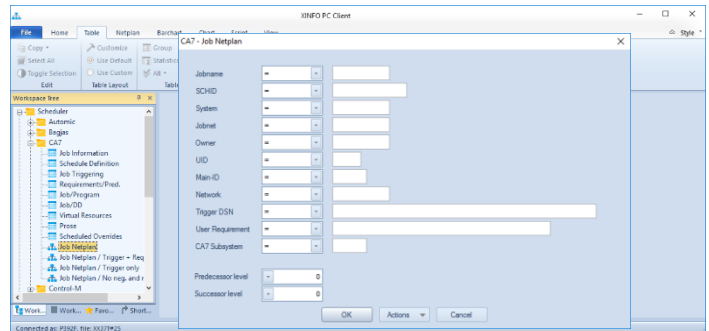
Graphics

XINFO displays your CA-7 definitions as easy-to-read graphics:

- Job netplans including triggers and requirements, dataset trigger
- All predecessors or successors of a start job
- Supports all printers

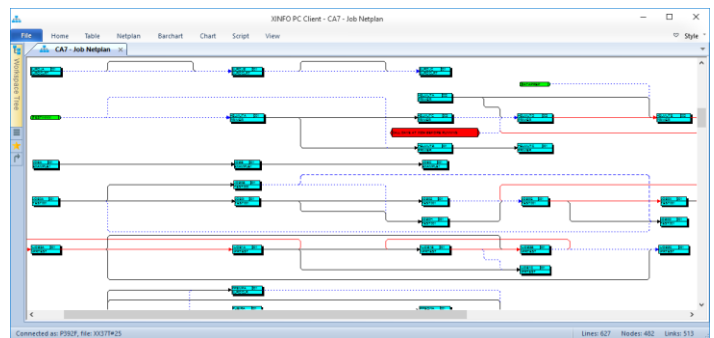
Data center documentation

All reports and graphics can be created automatically.



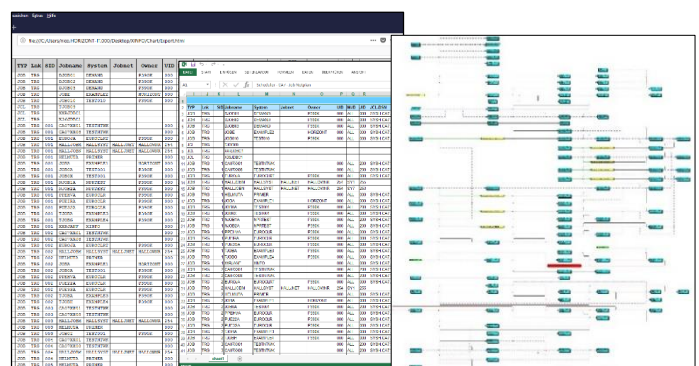
Dialogs

XINFO's PC Client enables you to enter selection criteria in predefined panels and display the results in tables. Of course there is also an ISPF Dialog.



Graphics

XINFO represents your CA-7 definitions as clear graphics. Because: A picture is worth a thousand words!



Representation

XINFO enables you to share your data in various ways: Export Graphics to WinWord, tables to Excel, or distribute jobflows via the Intranet.