



HORIZONT

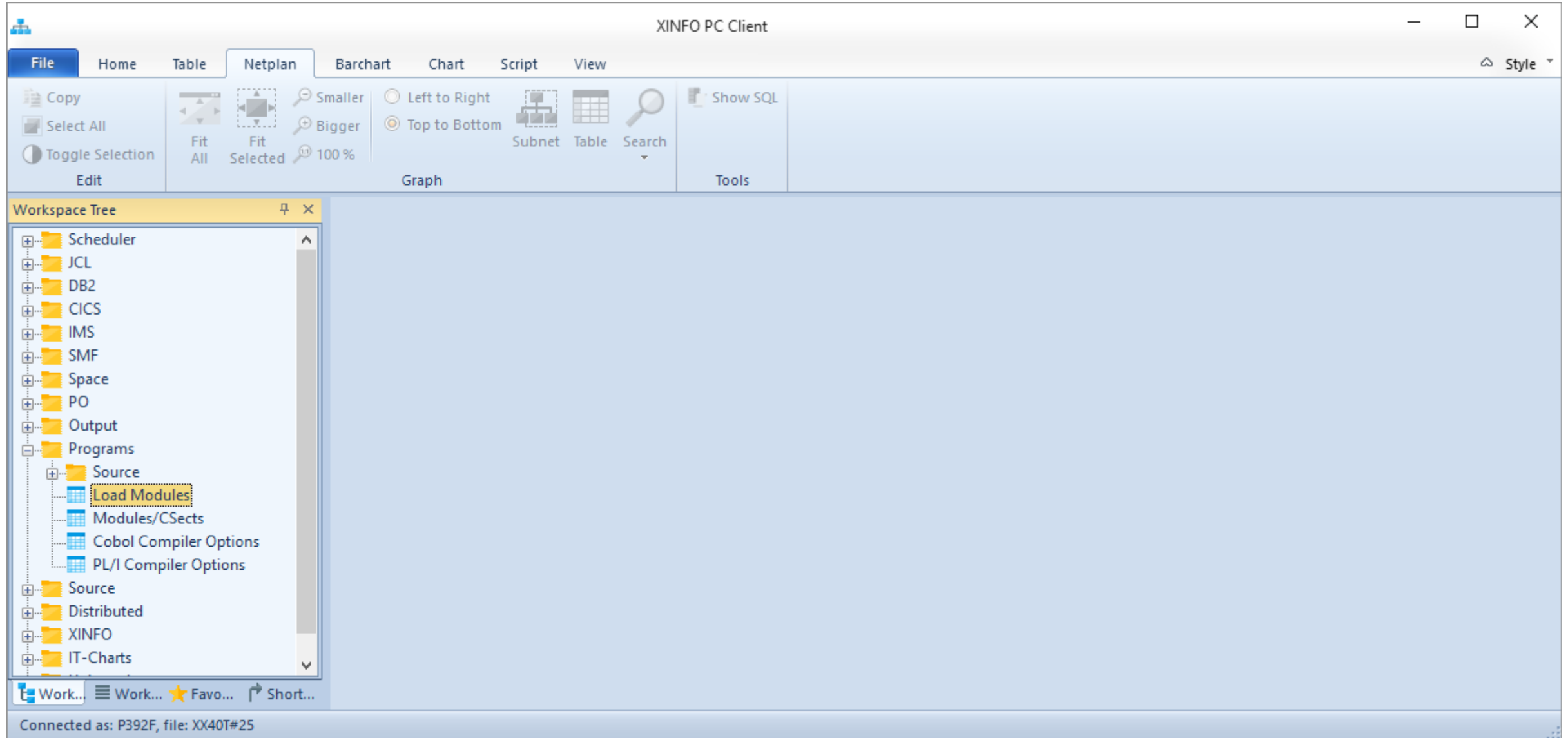
XINFO – Scanner z/OS – Load Modules

XINFO and Load Modules

The Load Module Scanner analyses binaries.

- The display “Load Module” includes some general information about load modules, e.g.
 - Timestamps
 - APF Authorization
 - Size
 - A- and RMode
- The display “CSECS” includes some general information about calls and sub programs, e.g.
 - Load module name (main)
 - Called sub program
 - Compile date and time

Load Module Scanner



Load Module Scanner

Programs - Load Modules

Module	=		
Load Lib	=	*.SMARTJCL.*	
Mod-Size	=		
Link-Date	>	01.01.2016	DD.MM.YYYY
Link-Time	=		HH:MM:SS
Alias Y/N	=		
APF Code	=		
AMODE	=		
RMODE	=		
RENT Y/N	=		
REUSE Y/N	=		
TEST Y/N	=		
Load Y/N	=		
Scatter Y/N	=		
Executable Y/N	=		
DS-Type (PDS/PDSE)	=		
Binder-ID	=		
Binder-WV	=		
Binder-RR	=		

Which SmartJCL Modules are linked after 01.01.2016

OK Actions Cancel

Load Module Scanner

XINFO PC Client - Programs - Load Modules

File Home Table Netplan Barchart Chart Script View Style

Programs - Load Modules

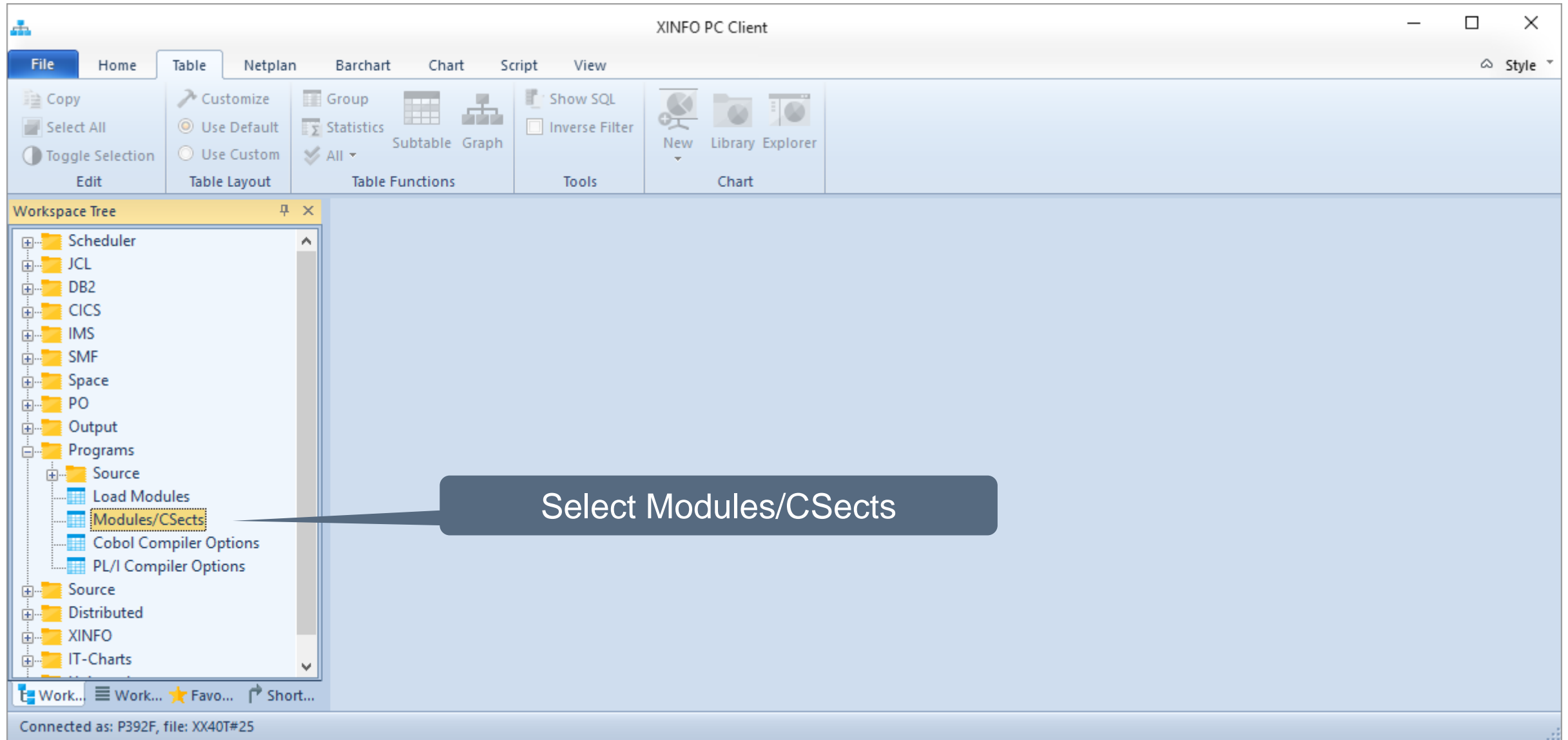
Module	Mod-Size	Link-Date	LinkTime	LoadLib	ALIAS	APF	AMODE	RMODE	RENT	REUS	OVLY	TEST	LOAD	SCTR	EXEC	DS-T	Binder-ID	B-VV	B-F
<all>	<all>	<all>	<all>	<all>	<all>	<all>	<all>	<all>	<all>	<all>	<all>	<all>	<all>	<all>	<all>	<all>	<all>	<all>	<all>
JCKAPANE	184	15.07.2016	13:23:13	SYSH.SMARTJCL.V3R2.LOAD	N	00	31	24	N	N	N	N	N	N	Y	PDS	5695PMB01	01	13
JCKASPL	3480	15.07.2016	13:23:14	SYSH.SMARTJCL.V3R2.LOAD	N	01	31	ANY	Y	Y	N	N	N	N	Y	PDS	5695PMB01	01	13
JCKASU	864	15.07.2016	13:23:15	SYSH.SMARTJCL.V3R2.LOAD	N	01	31	24	Y	Y	N	N	N	N	Y	PDS	5695PMB01	01	13
JCKAVTOC	1784	15.07.2016	13:23:16	SYSH.SMARTJCL.V3R2.LOAD	N	01	31	24	N	N	N	N	N	N	Y	PDS	5695PMB01	01	13
JCKIMAC	3804640	15.07.2016	13:54:59	SYSH.SMARTJCL.V3R2.LOAD	N	01	31	ANY	N	N	N	N	N	N	Y	PDS	5695PMB01	01	13
JCKIMACR	588912	15.07.2016	13:55:56	SYSH.SMARTJCL.V3R2.LOAD	N	01	31	ANY	N	N	N	N	N	N	Y	PDS	5695PMB01	01	13
JCKIPS	6116360	15.07.2016	13:55:15	SYSH.SMARTJCL.V3R2.LOAD	N	01	31	ANY	N	N	N	N	N	N	Y	PDS	5695PMB01	01	13
JCKIPSR	842496	15.07.2016	13:56:07	SYSH.SMARTJCL.V3R2.LOAD	N	01	31	ANY	N	N	N	N	N	N	Y	PDS	5695PMB01	01	13
JCKIPSS	842496	15.07.2016	13:56:07	SYSH.SMARTJCL.V3R2.LOAD	N	01	31	ANY	N	N	N	N	N	N	Y	PDS	5695PMB01	01	13
JCKIPSS	842496	15.07.2016	13:56:07	SYSH.SMARTJCL.V3R2.LOAD	N	01	31	ANY	N	N	N	N	N	N	Y	PDS	5695PMB01	01	13
JCKIPSS	842496	15.07.2016	13:56:07	SYSH.SMARTJCL.V3R2.LOAD	N	01	31	ANY	N	N	N	N	N	N	Y	PDS	5695PMB01	01	13
JCKIRFMT	6617400	15.07.2016	13:55:47	SYSH.SMARTJCL.V3R2.LOAD	N	01	31	ANY	N	N	N	N	N	N	Y	PDS	5695PMB01	01	13
JCKISTD	417584	15.07.2016	13:55:51	SYSH.SMARTJCL.V3R2.LOAD	N	01	31	ANY	N	N	N	N	N	N	Y	PDS	5695PMB01	01	13
MJVIBAT	348200	15.07.2016	13:56:33	SYSH.SMARTJCL.V3R2.LOAD	N	00	31	ANY	N	N	N	N	N	N	Y	PDS	5695PMB01	01	13
MJVICM1	245520	15.07.2016	13:56:51	SYSH.SMARTJCL.V3R2.LOAD	N	00	31	ANY	N	N	N	N	N	N	Y	PDS	5695PMB01	01	13
OPGICPR	137656	30.05.2016	18:09:49	SYSH.SMARTJCL.V3R2.LOAD	N	00	31	ANY	N	N	N	N	N	N	Y	PDS	5695PMB01	01	13
OPGICPUB	811048	30.05.2016	18:09:29	SYSH.SMARTJCL.V3R2.LOAD	N	01	31	ANY	N	N	N	N	N	N	Y	PDS	5695PMB01	01	13
OPGICPUC	836352	30.05.2016	18:09:20	SYSH.SMARTJCL.V3R2.LOAD	N	01	31	ANY	N	N	N	N	N	N	Y	PDS	5695PMB01	01	13
OPGICPUD	841864	30.05.2016	18:09:11	SYSH.SMARTJCL.V3R2.LOAD	N	01	31	ANY	N	N	N	N	N	N	Y	PDS	5695PMB01	01	13
OPGICPUE	844840	30.05.2016	18:09:02	SYSH.SMARTJCL.V3R2.LOAD	N	01	31	ANY	N	N	N	N	N	N	Y	PDS	5695PMB01	01	13
OPGICPUF	844968	30.05.2016	18:08:54	SYSH.SMARTJCL.V3R2.LOAD	N	01	31	ANY	N	N	N	N	N	N	Y	PDS	5695PMB01	01	13
OPGICPUG	845224	30.05.2016	18:08:45	SYSH.SMARTJCL.V3R2.LOAD	N	01	31	ANY	N	N	N	N	N	N	Y	PDS	5695PMB01	01	13
OPGICPUH	856792	30.05.2016	18:08:35	SYSH.SMARTJCL.V3R2.LOAD	N	01	31	ANY	N	N	N	N	N	N	Y	PDS	5695PMB01	01	13
OPGIGEN	119752	30.05.2016	18:09:46	SYSH.SMARTJCL.V3R2.LOAD	N	00	31	ANY	N	N	N	N	N	N	Y	PDS	5695PMB01	01	13

Connected as: P392F, file: XX40T#25

Lines: 37

Pretty late!

Load Module Scanner



Select Modules/Csects

Load Module Scanner

Programs - Modules/Csects

Module	=		
Load Lib	=		
CSECT	=	LSTINI11	
CSECT Type	=		
CSECT Length	=		
CSECT Translator	=		
CSECT Translator VR	=		
CSECT Translator MR	=		
CSECT Transl. Date	>	04.12.2014	DD.MM.YYYY
CSECT AMODE	=		
CSECT RMODE	=		
CSECT No.	=		
Mod-Size	=		
Link-Date	=		

Link-Time	=		HH:MM:SS
Alias Y/N	=		
APF Code	=		
AMODE	=		
RMODE	=		
RENT Y/N	=		
REUSE Y/N	=		
OVERLAY Y/N	=		
TEST Y/N	=		
Binder-ID	=		
Binder-VV	=		
Binder-RR	=		

OK Actions Cancel

Which programs are using module LSTINI11 that was compiled at 04.12.2014?

Load Module Scanner

XINFO PC Client - Programs - Modules/Csects

File Home Table Netplan Barchart Chart Script View Style

Programs - Modules/Csects

Module	Csect	CS-No	Typ	CS-Len	Translator	TV	TM	Tmsl-Date	CS-AM	CS-RM	Link-Date	LinkTime	Mod-Size	LoadLib	ALIAS	APF	AMODE	RMODE
<all>	<all>	<all>	<	<all>	<all>			<all>	<all>	<all>	<all>	<all>	<all>	<all>	<all>	<all>	<all>	<all>
XXRIXD4	LSTINI11	880	SD	424	5655-W67	44	00	19.06.2015	ANY	31	19.06.2015	18:39:44	1791080	SYSH.XINFO.V3R5.LOAD	N	01	31	ANY
JUPIPO	LSTINI11	404	SD	432	5655-W67	44	00	27.08.2015	ANY	31	23.06.2017	09:43:29	2418928	SYSH.XINFO.V3R6.LOAD	N	01	31	ANY
JUPIPRC	LSTINI11	714	SD	432	5655-W67	44	00	27.08.2015	ANY	31	23.06.2017	09:43:36	1223344	SYSH.XINFO.V3R6.LOAD	N	01	31	ANY
XXRIASM	LSTINI11	269	SD	432	5655-W67	44	00	27.08.2015	ANY	31	20.04.2017	16:04:01	306048	SYSH.XINFO.V3R6.LOAD	N	00	31	ANY
XXRILOA	LSTINI11	126	SD	432	5655-W67	44	00	27.08.2015	ANY	31	11.11.2016	14:41:30	288264	SYSH.XINFO.V3R6.LOAD	N	00	31	ANY
XXRIPG	LSTINI11	411	SD	432	5655-W67	44	00	27.08.2015	ANY	31	31.05.2017	14:12:47	518320	SYSH.XINFO.V3R6.LOAD	N	00	31	ANY
XXRIWT1	LSTINI11	237	SD	432	5655-W67	44	00	27.08.2015	ANY	31	08.05.2017	16:50:51	132888	SYSH.XINFO.V3R6.LOAD	N	00	31	ANY
XXRIXD	LSTINI11	577	SD	432	5655-W67	44	00	27.08.2015	ANY	31	26.06.2017	18:53:31	807176	SYSH.XINFO.V3R6.LOAD	N	00	31	ANY
XXRIXD4	LSTINI11	1248	SD	432	5655-W67	44	00	27.08.2015	ANY	31	31.05.2017	14:23:37	1900024	SYSH.XINFO.V3R6.LOAD	N	01	31	ANY
JUPIPO	LSTINI11	404	SD	432	5655-W67	44	00	27.08.2015	ANY	31	23.06.2017	09:43:29	2418928	SYSH.XINFO.V3R7.LOAD	N	01	31	ANY
JUPIPRC	LSTINI11	714	SD	432	5655-W67	44	00	27.08.2015	ANY	31	23.06.2017	09:43:36	1223344	SYSH.XINFO.V3R7.LOAD	N	01	31	ANY
XXRIASM	LSTINI11	269	SD	432	5655-W67	44	00	27.08.2015	ANY	31	20.04.2017	16:04:01	306048	SYSH.XINFO.V3R7.LOAD	N	00	31	ANY
XXRILOA	LSTINI11	126	SD	432	5655-W67	44	00	27.08.2015	ANY	31	11.11.2016	14:41:30	288264	SYSH.XINFO.V3R7.LOAD	N	00	31	ANY
XXRIPG	LSTINI11	411	SD	432	5655-W67	44	00	27.08.2015	ANY	31	31.05.2017	14:12:57	518320	SYSH.XINFO.V3R7.LOAD	N	00	31	ANY
XXRIWT1	LSTINI11	236	SD	432	5655-W67	44	00	27.08.2015	ANY	31	08.05.2017	16:50:59	132416	SYSH.XINFO.V3R7.LOAD	N	00	31	ANY
XXRIXD	LSTINI11	576	SD	432	5655-W67	44	00	27.08.2015	ANY	31	26.06.2017	18:53:40	808264	SYSH.XINFO.V3R7.LOAD	N	00	31	ANY
XXRIXD4	LSTINI11	1247	SD	432	5655-W67	44	00	27.08.2015	ANY	31	31.05.2017	14:24:39	1899824	SYSH.XINFO.V3R7.LOAD	N	01	31	ANY
JUPIPO	LSTINI11	404	SD	432	5655-W67	44	00	27.08.2015	ANY	31	23.06.2017	09:43:29	2418928	SYSH.XINFO.V4R0.LOAD	N	01	31	ANY
JUPIPRC	LSTINI11	714	SD	432	5655-W67	44	00	27.08.2015	ANY	31	23.06.2017	09:43:36	1223344	SYSH.XINFO.V4R0.LOAD	N	01	31	ANY
XXRIASM	LSTINI11	269	SD	432	5655-W67	44	00	27.08.2015	ANY	31	20.04.2017	16:04:01	306048	SYSH.XINFO.V4R0.LOAD	N	00	31	ANY
XXRICD	LSTINI11	216	SD	432	5655-W67	44	00	27.08.2015	ANY	31	15.05.2016	11:56:20	159960	SYSH.XINFO.V4R0.LOAD	N	00	31	ANY
XXRICHK	LSTINI11	237	SD	432	5655-W67	44	00	27.08.2015	ANY	31	08.09.2016	21:30:18	154456	SYSH.XINFO.V4R0.LOAD	N	00	31	ANY
XXRILOA	LSTINI11	126	SD	432	5655-W67	44	00	27.08.2015	ANY	31	11.11.2016	14:41:30	288264	SYSH.XINFO.V4R0.LOAD	N	00	31	ANY
XXRIMD	LSTINI11	296	SD	432	5655-W67	44	00	27.08.2015	ANY	31	11.11.2016	14:41:30	315048	SYSH.XINFO.V4R0.LOAD	N	00	31	ANY

Connected as: P392F, file: XX40T#25

Lines: 39

These programs are using the module

Thanks for your attention! Do you have any questions?

The logo for 'HORIZONT' features the word in a bold, sans-serif font. The letter 'O' is highlighted in red, while the other letters are in dark grey. The background is light grey with a red curved shape on the left and several faint, semi-transparent geometric shapes (squares and a triangle) scattered around the text.

HORIZONT

Please feel free to visit us in Munich or send an email to
info@horizont-it.com