



HORIZONT

XINFO – Scanner z/OS – Control-D

What is this presentation about?

- This PowerPoint gives you a short overview about XINFO's Scanner for Control-D and how to use it.

At some slides this button can be used to jump to specific slides in this presentation.

e.g. jump to slide xyz

Click on this symbol to jump to the overview slide

AGENDA

**XINFO – Scanner z/OS –
Control-D**

Control-D – You like to know about ...

General Parms

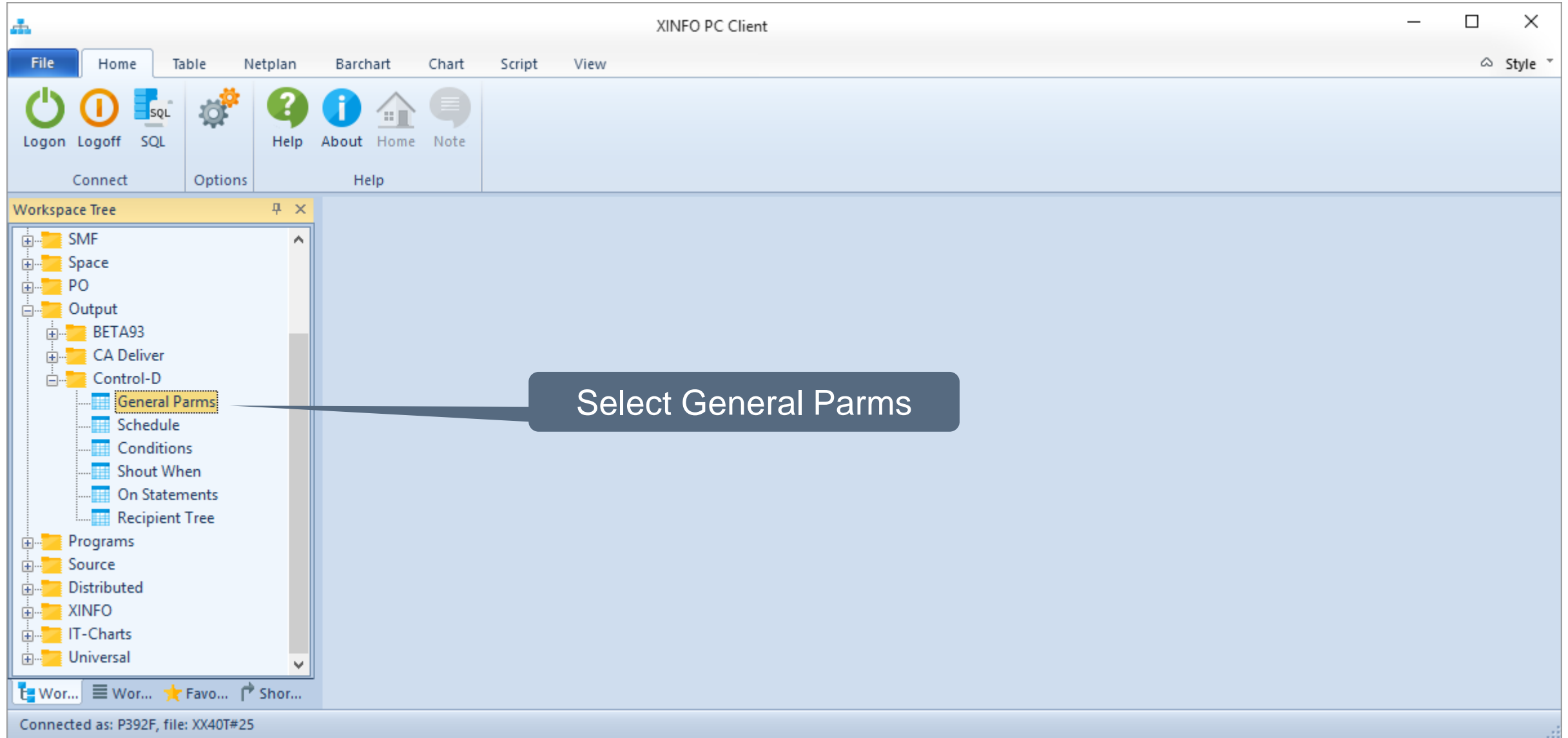
Schedules

Conditions

Control-D – Displays



Control-D – General Parm



Control-D – General Parm

Control-D General Parm

Report-Member

=

Category

=

JobName

=

Owner

=

M22

Task Type

=

Group

=

JobID

=

Description

=

Generic

Monitor

Default Cop

Default Max Copies

=

Default User

=

You like to see all reports
for owner "M22" ...

Default Level

=

Default DEST

=

No. In-Cond.

=

No. Out-Cond.

=

No. Shout When

=

No. ON Statements

=

No. When Line

=

Report-Library

=

Control-D

=

OK

Actions

Cancel

Control-D – General ParmS

XINFO PC Client - Control-D General ParmS

File Home Table Netplan Barchart Chart Script View Style

Copy Select All Toggle Selection Edit Customize Use Default Use Custom Table Layout Group Statistics All Table Functions Show SQL Inverse Filter Tools New Library Explorer Chart

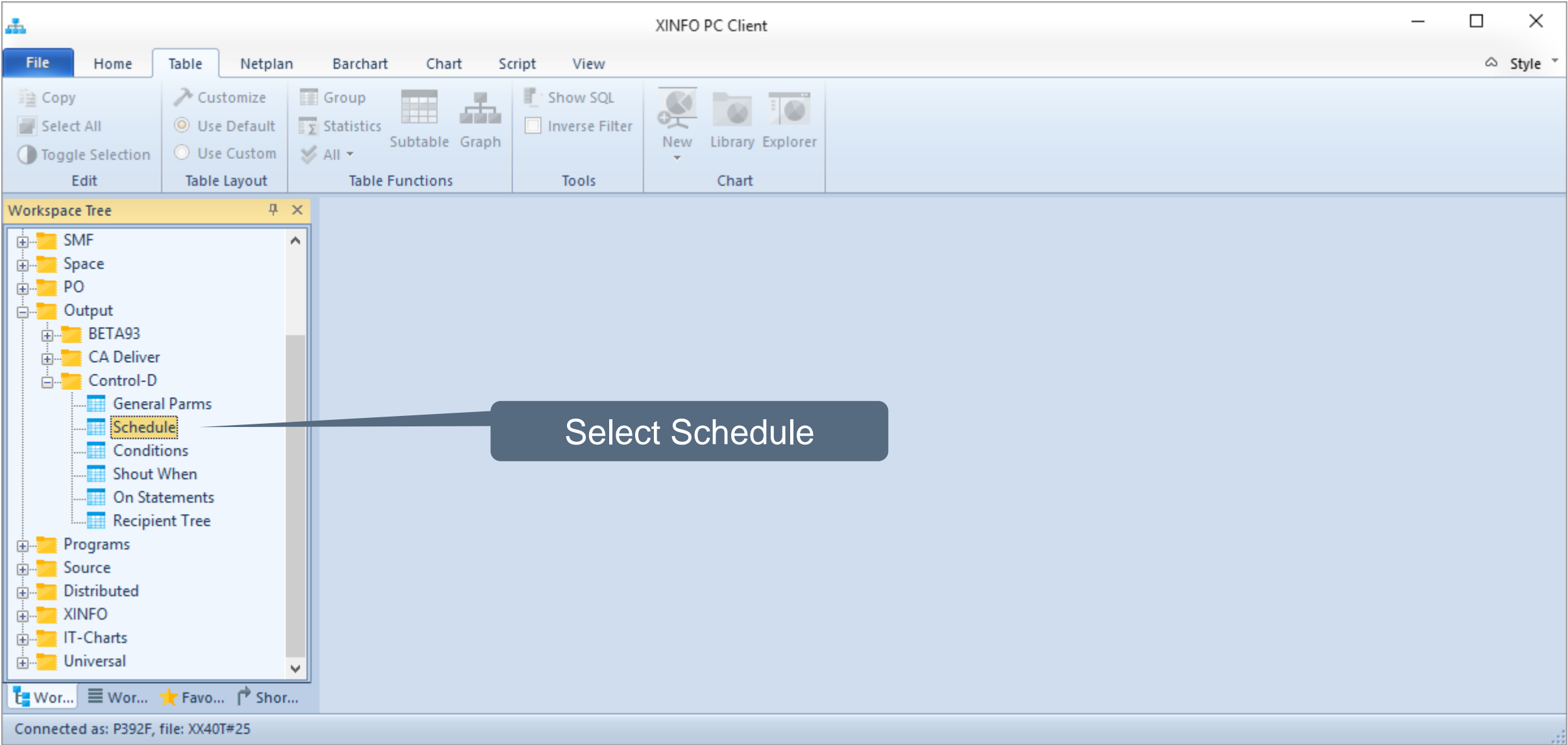
Control-D General ParmS

Rep-Mem	Category	JobName	Owner	Task T	Group	JobID	Description	G	M	DC	DM	Default User	DL	Def-DEST	No.In-Cond	No.Out-Cond
<all>	<all>	<all>	<all>	<all>	<all>	<...>	<all>				<...>	<all>		<all>	<all>	<all>
CTDJOB1	DAILY	CTDJOB1	M22	REP			INVENTORY AND EMPLOYEE SAMPLE REPORTS			01		UNIDENT			0	0
CTDJOB2	DAILY	CTDJOB2	M22	REP			SAMPLE BANKING REPORT			01		UNIDENT			1	0
CTDJOB3	DAILY	CTDJOB3	M22	REP			INVENTORY AND EMPLOYEE SAMPLE REPORTS	N	1	01		UNIDENT			0	0
DEMO1D	DAILY	CTDJOB	M22	REP			INVENTORY AND EMPLOYEE SAMPLE REPORTS			01		UNIDENT			0	0
PRODJCL	DAILY	*	M22	REP	MSGCLASS-JCL		GENERIC - FOR ALL PRODUCTION MSGCLASS (JCL)	Y	1	01		UNIDENT			0	0

All reports for owner "M22"

Connected as: P392F, file: XX40T#25 Lines: 5

Control-D – Schedules



Control-D – Schedules

Control-D Schedule

Report-Member

=

Category

=

JobName

=

Owner

=

Dates

=

Days

=

DCAL

=

WDAYS

=

2

WCAL

=

And/Or

=

You like to see all
schedules that are
planned for WDAY "2" ...

Months

=

CONFICAL

=

Shift

=

Retro

=

MaxWait

=

PDS

=

Minimum

=

Report-Library

=

Control-D

=

OK

Actions

Cancel

Control-D – Schedules

File

Home

Table

Netplan

Barchart

Chart

Script

View

Copy

Select All

Toggle Selection

Edit

Customize

Use Default

Use Custom

Table Layout

Group

Statistics

All

Table Functions

Subtable

Graph

Show SQL

Inverse Filter

Tools

New

Library

Explorer

Chart

Style

Control-D Schedule

Rep-Mem	Category	JobName	Owner	Dates	Days	DCAL	WDAYS	WCAL	A	Months	CONI
<all>	<all>	<all>	<all>	<...>	<all>	<all>	<all>	<all>		<all>	
CTDJOB3	TEST#MIT#LANGER#CATE	XXRIXD	M2222222		D62P1,-D62P1,L62P1,-L62P1,D*P1,D63P1	DEFAULTC	1,<1,>1,L1,+2,<2,>2,L2,-3,<3,>3,<4,>4,<5,>5,<6,>6,D6	MYWCALDE	0	NYYYNYYYYYY	

Workspace Tree

Connected as: P392F, file: XX40T#25

Lines: 1

This schedule is planned for WDAY “2” ...

Control-D – Schedules

The screenshot displays the Control-D Schedules interface. On the left, a 'Workspace Tree' shows a 'Control-D Schedule' with a table containing 'Rep-Mem' and 'Category' columns. The main 'Details' window is open, showing a table of schedule parameters. A callout bubble points to the 'Retro' value 'Y' with the text 'Detailed information on a fingertip'. The bottom of the interface shows a status bar with 'Connected as: P392F, file: XX40T#25' and buttons for 'OK', 'Copy', 'Print...', and 'Save As...'. A partial view of another window on the right shows a table with columns 'CAL', 'A', 'Months', and 'CONI'.

Name	Value
Report-Member	CTDJOB3
Category	TEST#MIT#LANGER#CATE
JobName	XXRIXD
Owner	M2222222
Dates	
Days	D62P1,-D62P1,L62P1,-L62P1,D*P1,D63P1
DCAL	DEFAULTC
WDAYS	1,<1,>1,L1,+2,<2,>2,L2,-3,<3,>3,<4,>4,<5,>5,<6,>6,D6
WCAL	MYWCALDE
And/Or	O
Months	YYYYYYYYYY
CONFCAL	
Shift	
Retro	Y
MaxWait	00
PDS	
Minimum	
Report-Library	SYSH.CTD.OPER.REPORTS
Control-D	CTD5

Detailed information on a fingertip

Connected as: P392F, file: XX40T#25

OK Copy Print... Save As...

Lines: 1

Control-D – Conditions

File

Home

Table

Netplan

Barchart

Chart

Script

View

Copy

Select All

Toggle Selection

Edit

Customize

Use Default

Use Custom

Table Layout

Group

Statistics

Show SQL

Inverse Filter

Workspace Tree

SMF

Space

PO

Output

BETA93

CA Deliver

Control-D

General Parms

Schedule

Conditions

Shout When

On Statements

Recipient Tree

Programs

Source

Distributed

XINFO

IT-Charts

Universal

XINFO PC Client

Control-D Conditions

Report-Member

=

Category

=

JobName

=

Owner

=

Cond-Name

=

Cond-Type (IN/OUT)

=

OUT

Date Ref

=

Option (+/-)

=

Report-Library

=

Control-D

=

OK

Actions

Cancel

Which jobs set OUT-conditions?

Wor...

Wor...

Favo...

Shor...

Connected as: P392F, file: XX40T#25

Control-D – Conditions

XINFO PC Client - Control-D Conditions

File Home Table Netplan Barchart Chart Script View Style

Copy Select All Toggle Selection Edit Customize Use Default Use Custom Table Layout Group Statistics All Table Functions Show SQL Inverse Filter Tools New Library Explorer Chart

Control-D Conditions

Rep-Mem	Category	JobName	Owner	Cond-Name	Typ	Date	O	Report-Library	Subs
<all>	<all>	<all>	<all>	<all>	<...	<...		<all>	<...
CTDJOB4	TEST1	XXRIXD4	M2222222	MY-OUTCONDTION	OUT	ODAT	+	SYSH.CTD.OPER.REPORTS	CTD5
CTDJOB4	TEST1	XXRIXD4	M2222222	MY-OUTCONDTION2	OUT	STAT	-	SYSH.CTD.OPER.REPORTS	CTD5
CTDJOB4	TEST1	XXRIXD4	M2222222	MY-OUTCONDTION3	OUT	ODAT	+	SYSH.CTD.OPER.REPORTS	CTD5
CTDJOB4	TEST1	XXRIXD4	M2222222	MY-OUTCONDTION4	OUT	STAT	-	SYSH.CTD.OPER.REPORTS	CTD5

Here are the jobs with OUT-conditions

Connected as: P392F, file: XX40T#25 Lines: 4

Control-D – Conditions in Control-M Jobnetplan

The screenshot displays the 'XINFO PC Client - Control-M - Job Netplan' window. The interface includes a menu bar (File, Home, Table, Netplan, Barchart, Chart, Script, View) and a toolbar with various icons for editing and viewing. The main workspace shows a job netplan with two identical job nodes, each represented by a trapezoidal shape containing the text 'CTDJOB4', 'TEST1', and 'CTD5'. A callout box points to these nodes with the text 'Control – D condition are displayed graphically'. The status bar at the bottom indicates 'Connected as: P392F, file: XX40T#25' and 'Lines: 2 Nodes: 2 Links: 0'.

Control – D condition are displayed graphically

Thanks for your attention! Do you have any questions?

The logo for 'HORIZONT' is displayed in a large, sans-serif font. The letter 'H' is dark grey, followed by a red circle, and then the letters 'ORIZONT' in dark grey. To the left of the red circle is a yellow triangle. Above the 'H' is a blue square. Below the 'O' is a blue square. To the right of the 'T' is a yellow circle. A large red curved shape is on the left side of the slide.

HORIZONT

Please feel free to visit us in Munich or send an email to
info@horizont-it.com