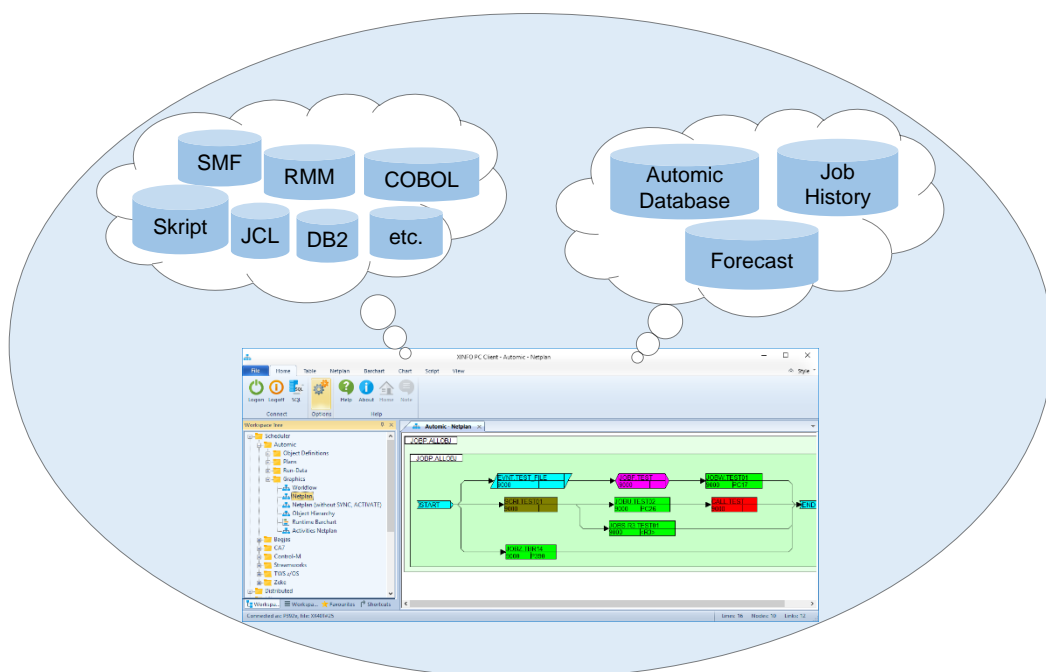


XINFO

Atomic (UC4)

For years, batch production has been predicted to come to a close end. The increasingly use of standard software and online systems should make batch programs needless and batch production is expected to become less important.

In reality, the number of batch programs is constantly increasing. A scheduler such as Atomic (UC4) performs a central function: the batch production is centrally planned, executed and monitored.



XINFO - The IT Information System

Atomic is perfectly equipped for this task with its comprehensive planning and monitoring mechanisms. However, the existing dialogs are not suitable for creating meaningful and revision-proof documentation of the job processes.

XINFO analyzes your Atomic database and the statistics. The user can call all the informations about jobs, job plans, dependencies etc. Complex procedures are displayed graphically as netplans. Complex processes are displayed graphically as networks. Relationships create connections to other data.

XINFO

Automatic (UC4)

Areas of Application

XINFO is the information and documentation system for all employees, who work directly with Automatic (UC4) – or simply need general information about Automatic job procedures:

- Production planning and control
- Application programmers
- Specialized departments

Cross Reference

XINFO analyses Automatic database as well as the job history:

- You can search after all data under usage of comparative operators, AND-OR logic and from to intervals
- You can export Automatic data as you like, the following standard formats are supported: Excel, HTML, CSV, TXT (Table); JPG, PNG, TIF, BMP (Netplan)
- You can use the statistics to create any assessments, e.g. a list of all jobs, which ran between 1:00 am and 3:00 am at month-end

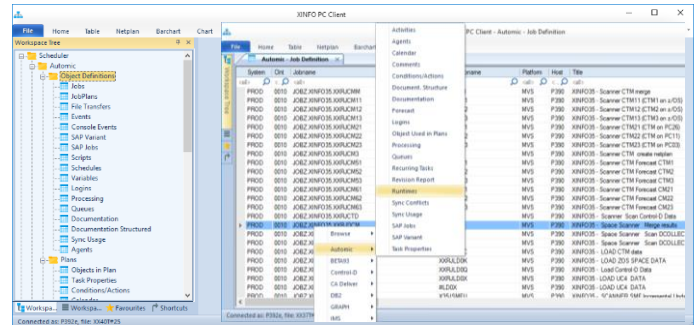
Graphics

XINFO displays your Automatic data in clear graphics:

- Job netplans
- Jobplan netplans
- Object hierarchy
- Gantt charts for graphical display of job runtimes

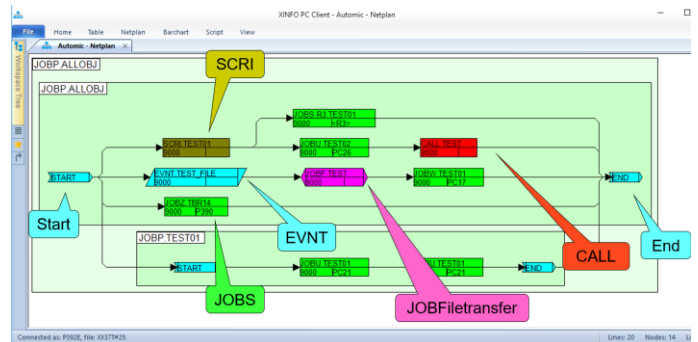
Data center documentation

All reports and graphics can be created automatically.



Dialogs

XINFO enables you to enter the search criteria in comfortable dialogs, the results displayed as a table. For experienced z/OS users there is also an ISPF dialog.



Graphics

XINFO displays your data as clear graphics: Job netplan, Run-time charts etc. Because: A picture is worth a thousand words!



Representation

XINFO enables you to display and share your data in various ways: Export Graphics to WinWord, tables to HTML or Excel, or distribute job netplans or your definitions via the Intranet.