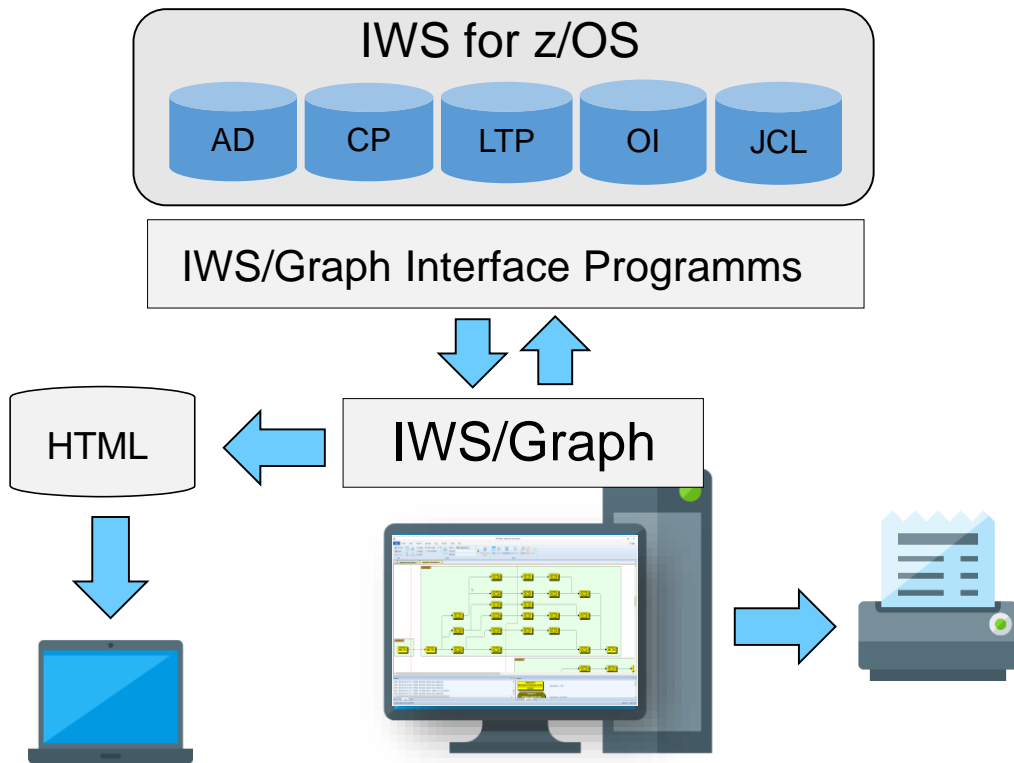


IWS/Graph

Graphics, Documentation and Monitoring for IWS z/OS

As a user of IWS, you know how important these systems are for planning, automation, and control of your batch processing. With perhaps thousands of jobs running every night, IWS is critical to the completion of your batch production.

However, as projects grow, they become harder and harder to manage. When you are faced with problems, change requests or simply the need to have IWS information available: IWS/Graph is the only choice.



IWS/Graph - The new view to IWS

IWS/Graph's PC component displays your IWS data in a way you have never seen before: Applications, operations, internal and external dependencies, run cycles, run rules and special resources etc. are shown as easy to understand netplans and barcharts.

Use IWS/Graph to distribute IWS information, even via the Internet or Intranet. Use any Browser to access IWS information from anywhere at anytime. Visit our homepage and see an example: www.horizont-it.com.

IWS/Graph

Graphics, Documentation and Monitoring for IWS z/OS

Areas of application

IWS/Graph is the program for anyone who needs information about IWS definitions, status information from the Current plan, etc.

- Production planning
- Production control
- Application programmers
- Non IT departments
- Project and test teams

Data

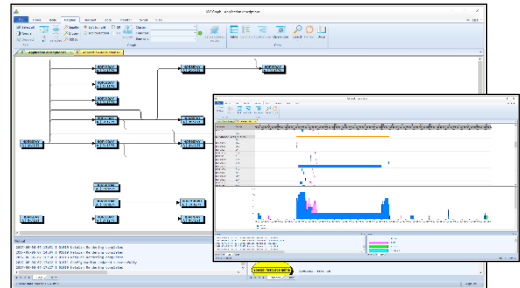
IWS/Graph allows access to data from the Application Description, the Current plan and the JCL.

- Applications and Schedules
- Operations
- Dependencies
- Special Resources
- Operator Instructions
- Status Information
- JCL

Online and Offline

IWS/Graph for z/OS can be used offline and online:

- Offline allows you to provide IWS information to departments, without giving them access to live data.
- Online provides direct access to the Application description and the Current plan. The Application description can be updated directly.
- Online as a Status monitor



Netplans and Barcharts

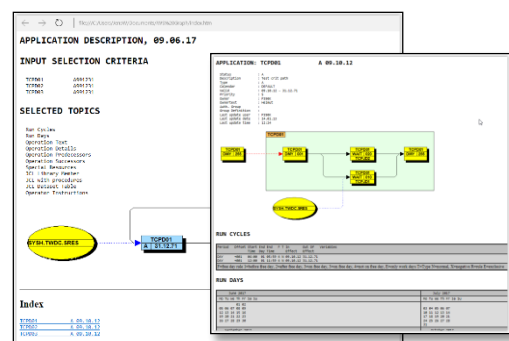
Your information is presented as an easy to understand netplan or barchart. Symbols can be customised for clarity and convenience.

A screenshot of the IWS/Graph software interface showing a status monitor table. The table has columns for various application and operation parameters.

Application	Type	App Start Date	Oper. Id	Instance	Op. Stat.	Wk. Id	System	Minibatch	Status	Time
TCPOB
...

Status monitor

Use IWS/Graph to monitor critical Applications and Operations, or the whole production. The REXX- and email interface allows you to set up a complete monitor and alerting system based on your IWS data.



Intra- and Internet

IWS/Graph supports your Web Browser in various ways: Distribute netplans and barcharts, documentation of your Applications and status information from the Current plan and can be automatically created as HTML files.